

Notice Inviting Short Tender
OFFICE OF THE CIVIL SURGEON DH MORENA
(GWALIOR DIVISION)

NIT. No. / SHORT tendering/ **02**

Dated**15/02/2022**

percentage rate bids for the following works are invited from registered contractors and Firms of repute fulfilling registration criteria:

S. No. /Pkg/ Code	Name of Work	District (s)	Probable Amount of Contract (Rs. in lakh)	Period of Completion
1	Electrical renovation mantince work in lali hariyali ward anc and pnc ward in dh morena	Morena	Rs 497057	15 Days Including Rainy Season from date of Issue of work Order

1. Interested bidders can view the detailed NIT on the website <https://dhmorena.in>
2. The Bid Document can be purchased/upload only online from **16.2.2022 to 22.2.2022 6 pm**
3. Amendments to NIT, if any, would be published on website only, and not in newspaper.



Civil surgeon
District Hospital morena mp

सिविल सर्जन सह मुख्य अस्पताल अधीन
जिला चिकित्सालय मुरैना (मि.प्र.)

Notice Inviting Short Tender
OFFICE OF CIVIL SURGEON DH MORENA

T.No. /2021-22 /short tendering/MORENA /02

Dated ...15./02 /2022

percentage rate bids for the following works are invited from registered contractors and Firms of repute fulfilling registration criteria:

S. No. /Pkg/ Code	Name of Work	District (s)	Probable Amount of Contract (Rs. in lakh)	Earnest Money Deposit (EMD) (In Rs.)	Cost of Bid Document	Category of Contractor	Period of Completion
1	2		3	4	5	6	7
1	Electrical renovation mantince work in lali hariyali ward anc and pnc ward in dh morena	Morena	Rs 497057	Rs. 20,000.00	Rs. 500/--	PWD Registration	15 Days Including Rainy Season from date of Issue of work Order

- All details relating to the Bid Document(s) can be viewed and downloaded free of cost on the website <https://dhmorena.in>
- निविदाकार को सीमित निविदा को नियमानुसार कार्यालय में जमा करना होगा। एक (अ) लिफाफे में सामिल निविदा में चाहे गये वांछित दस्तावेज एवं दूसरे (ब) लिफाफे में कार्य की दर सीलबंद कर उक्त दोनो लिफाफो को एक बडे लिफाफे में सीलबंद कर कार्यालय में दिनांक 16/2/2022 से 22/2/2022 शाम 06 बजे तक डाक, कोरियर एवं स्वयं के माध्यम से जमा किया जा सकेगा। उक्त लिफाफो पर निविदाकार का नाम पूर्ण पता अंकित होना अनिवार्य होगा।
- उपरोक्त कार्य को लोक निर्माण विभाग एवं M0प्र0 शासन के निर्धारित नियमानुसार इस कार्यालय द्वारा निर्धारित संबड्डीनियर एवं उपयंत्री के मार्गदर्शन में सम्पादित करना अनिवार्य होगा।
- निविदा को स्वीकृत करने का अधिकार सिविल सर्जन मुरैना को रहेगा। इसमें किसी भी प्रकार की दावे आपत्ति स्वीकार नहीं की जावेगी।
- निविदा फार्म को क्रय किये जाने की राशि का बैंकर्स चैक जो कि सचिव रोगी कल्याण समिति जिला चिकि0 मुरैना के नाम से देय होगा को निविदा के (अ) लिफाफे में वांछित दस्तावेजो के साथ मूलतः रखना अनिवार्य होगा। अन्यथा संबधित की सीमित निविदा स्वीकार नहीं की जावेगी। जिसकी समस्त जिम्मेदारी संबधित की होगी।
- निविदा की धरोहर राशि 20,000/- को एफ.डी.आर. के रूप में जो कि सिविल सर्जन सह मुख्य अस्पताल अधीक्षक जिला चिकि0 मुरैना के नाम से देय होगी को निविदा के (अ) लिफाफे में वांछित दस्तावेजो के साथ मूलतः रखना अनिवार्य होगा। अन्यथा संबधित की सीमित निविदा स्वीकार नहीं की जावेगी। जिसकी समस्त जिम्मेदारी संबधित की होगी।
- कटी हुई दर स्वीकार नहीं की जावेगी।
- सभी दस्तावेज निविदाकार द्वारा स्वयं प्रमाणित किया जाना अनिवार्य होगा।
- निविदा को दिनांक 23/2/2022 को दोपहर 03 बजे समिति के समक्ष खोला जावेगा। जिसमें निविदाकार स्वयं अथवा उनका प्रतिनिधि उपस्थित रह सकते हैं इसकी प्रथक से कोई सूचना नहीं दी जावेगी।



CIVIL SURGEON
DISTRICT HOSPITAL MORENA MP

सिविल सर्जन सह मुख्य अस्पताल अधीक्षक
जिला चिकित्सालय मुरैना


Electrical renovation mantince work in lali hariyali ward anc and pnc ward in dh morena
की आमंत्रित सीमित निविदा में वांछित दस्तावेज

सीमित निविदा लिफाफा "अ"

1. राशि 500/- का बैंकर्स चेक जो कि सचिव रोगी कल्याण समिति जिला चिकि0 मुरैना के नाम देय हो
2. राशि 20,000/- (बीस हजार) की एफ.डी.आर जो कि सिविल सर्जन सह मुख्य अस्पताल अधीक्षक मुरैना के नाम देय हो ।
3. लोक निर्माण विभाग म0प्र0 में जीवित पंजीयन ।
4. स्थापना जीवित पंजीयन ।
5. जी.एस.टी. पंजीयन
6. पेन कार्ड
7. फर्म का विगत् 03 वर्ष (2017-18ए 2018-19 एवं 2019-20) का टर्न ओवर प्रमाण पत्र चार्टर्ड एकाउंट द्वारा प्रमाणित ।
8. विगत् 03 वर्ष में लोक निर्माण विभाग दर पर किये गये कार्यों का अनुभव कार्य आदेश की प्रति
9. 10 रु. के स्टाम्प पर केन्द्र सरकार राज्य सरकार एवं अशासकीय संस्था में ब्लेक लिस्टेड नहीं होने का शपथ पत्र

सीमित निविदा लिफाफा "ब"

1. दर निर्धारित प्रपत्र में



सिविल सर्जन सह मुख्य अस्पताल अधीक्षक
जिला चिकित्सालय मुरैना

प्रति .

सिविल सर्जन सह मुख्य अस्पताल अधीक्षक

जिला चिकित्सालय मुरैना म0प्र0

विषय :- दर प्रस्तुत करने बावत् ।

S. No. /Pkg/ Code	Name of Work	District (s)	Probable Amount of Contract (Rs. in lakh)	Rate
1	2	3	4	5
1	Electrical renovation mantince work in lali hariyali ward anc and pnc ward in dh morena	Morena	Rs 497057	

फर्म का नाम

पता

मोबाइल नं.

फर्म की सील

1 set

TECHNICAL- REPORT

Work :-

TAIL ESTIMATE FOR ELECTRICAL RENOVATION AND MANTINANCE WORK IN LALI HARIYALI WARD , ANC AND PNC WARD at DISTRICT HOSPITAL MORENA MP

Estimated cost:- Rs. 497057

Authority :-

Directorate of Health Services Bhopal Collector sir district MORENA civil surgeon district Hospital MORENA MP

Year :-

2019-20

Head:-

Necessity :-

As per site Instruction given by civil surgeon district Hospital MORENA Estimate has been framed.

Provisions:-

Following provisions has been made in the Estimate.

6 Electrical Work

Technical Sanction:-

Executive Engineer / Assistant Engineer
/ NIM AND Director, Health service, Bhopal Gwalior

Rate:-

As Per Schedule of Rates for building work
issued by Engineer in Chief Govt. of M.P.
Bhopal w.e.f. 01/12/2020 and Amended up to date.

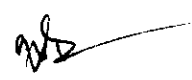
Agency:-

By contract system / other

Sub-Engineer (E&M)
Health Services Division Gwalior

Assistant Engineer
Health Services Division Gwalior

EXECUTIVE Engineer
Health Services Division Gwalior


सिविल सर्जन सह मुख्य अस्पताल अधीक्षक
जिला चिकित्सालय मुरैना (म०प्र०)

TRICAL WORK

**AIL ESTIMATE FOR ELECTRICAL RENOVATION AND MANTINANCE
WORK IN LALI HARIYALI WARD , ANC AND PNC WARD at DISTRICT
HOSPITAL MORENA MP**

ESTIMATE OPD WORK AT DH MORENA
MPPWD SOR 2020

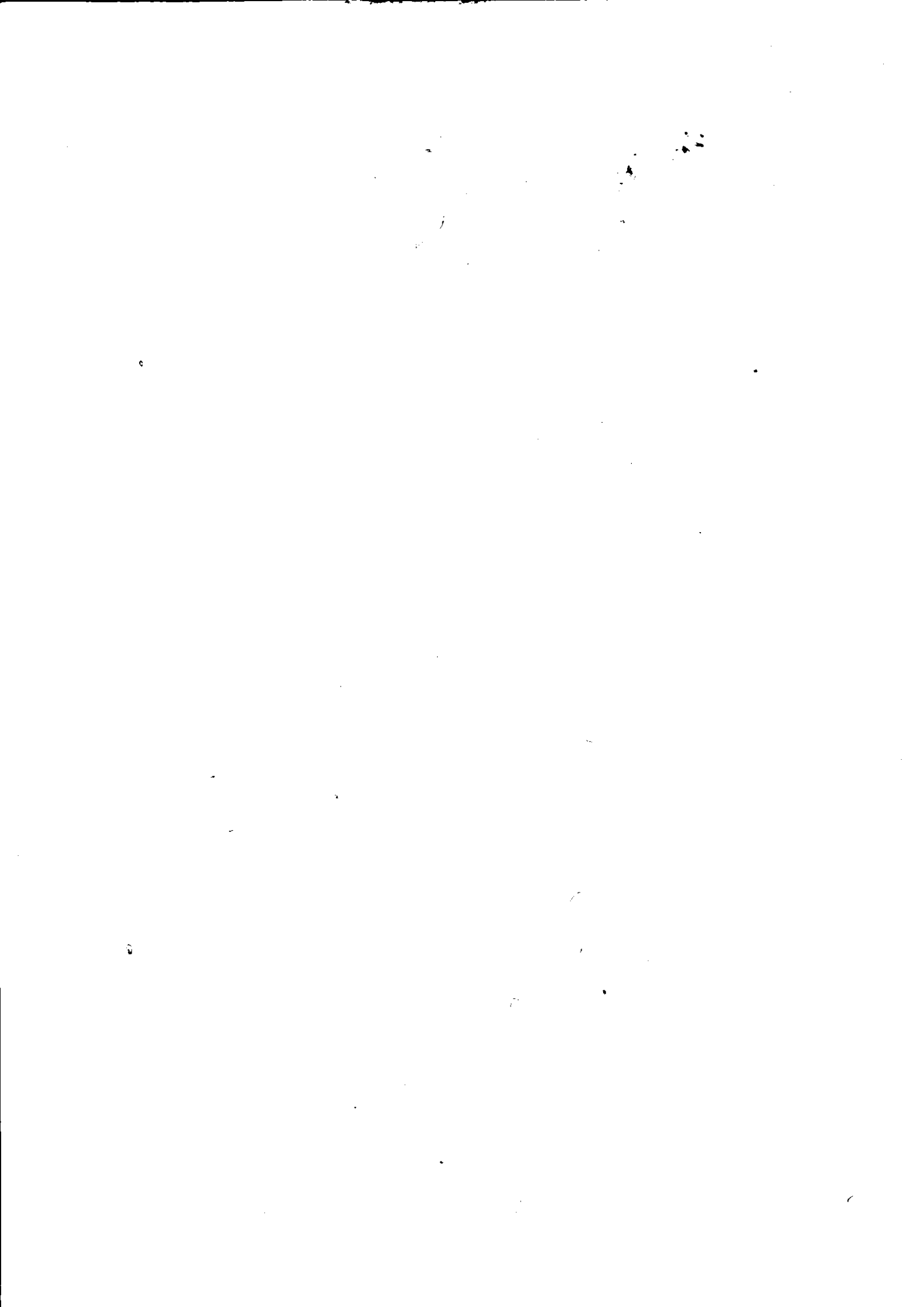
SOR I NO.	PARTICULARS OF ITEM	QTY.	UNIT	RATE	AMOUNT
3	Point wiring (excluding metallic switch box & sheet but including switches, sockets, lamp holders/ceiling roses etc) with 1.5sq. mm. PVC insulated cable FRLS with copper multi strand conductor ISI marked in surface rigid P.V.C. conduit (MMS) ISI marked of suitable size and 1.5sq. mm. PVC FRLS insulated copper earth continuity conductor of green colour inside conduit etc. as required as per specification for :-				
3.1	<u>Light Point/Fan Points.</u>				
	a) Short point	20	Each	282.00	5640.00
	b) Medium point	15	Each	487.00	7305.00
	c) Long point	8	Each	737.00	5896.00
	(Light point/fan points) looping point				0.00
3.1.2	Looping point secondary				
	Secondary short point	5	each	141.00	705.00
	Secondary medium point	5	each	244.00	1220.00
	Secondary long point	5	each	369.00	1845.00
3.2	Socket same board 6A Point wiring (excluding metallic switch box & sheet but including switches, sockets) for 3 pin 6 Amp. Socket outlet point with 1.5sq. mm. PVC insulated cable FRLS with copper multi strand conductor ISI marked in surface rigid P.V.C. conduit (MMS) ISI marked of suitable size and 1.5sq. mm. PVC insulated copper earth continuity conductor of green colour inside conduit with required materials as per specification on same board.	20	each	224.00	4480.00
					0.00
3.1.3	3 Pin 6 Amp socket outlet on separate board				0.00
	3.1.3.1 Short Short point	8	each	393	3144.00
	3.1.3.2 Medium Medium point	6	each	637	3822.00
	3.1.3.3 Long Long point	5	each	910	4550.00
	3.1.4 Call bell point Call bell/buzzer points				0.00
					0.00
3.1.4.3	<u>Call Bell / Buzzer Points</u>				
	3.1.4.3 Long Long point	5	Each	621	3105.00

	4.3 Circuit wiring 2.5Sq. mm Wiring for circuit wiring with PVC insulated cable FRLS with copper multi strand conductor ISI marked in concealed rigid P.V.C. conduit (HMS) of ISI marked suitable size etc. as required as per specification				0.00
	3.3.1 2 Wire 2x2.5 Sq.mm.	125	Meter	69.00	8625.00
	3.3.2 4 Wire 4x2.5 Sq.mm.	45	Meter	116.00	5220.00
	3.3.3 6 Wire 6x2.5 Sq.mm.	46	Meter	155.00	7130.00
8.1	8.1 Power point wiring surface rigid P.V.C. conduit Point wiring (excluding metallic switch box & sheet) for 3 Pin 16 Amp. socket outlet point with 4sq. mm. PVC insulated cable FRLS with copper multi strand conductor ISI marked in surface rigid P.V.C. conduit (MMS) ISI marked of suitable size etc. with 20/16 Amp. F.T. switch & socket/S.S. combined 20/16/6 Amp. of ISI marked and 4sq. mm. PVC insulated FRLS copper earth continuity conductor of green colour inside conduit, screwless connector for joints as per specification for :-				0.00
	8.1.1 Power point On separate board				0.00
	8.1.1.1 Short Short point	8	Each	576.00	4608.00
	8.1.1.2 Medium Medium point	8	Each	943.00	7544.00
	8.1.1.3 Long Long point	8	Each	1360.00	10880.00
	8.1.1.4 Ex. long-I Extra long-I	6	Each	1873.00	11238.00
	8.1.1.5 Ex. long-II Extra long-II	3	Each	2433.00	7299.00
	8.1.1.6 Ex. longIII Extra long-III	3	Each	3004.00	9012.00
8.2	9.2 Same board Same board switch & socket 16 Amp./S.S. combined 20/16/6 Amp	10	35	342.00	3420.00
	Supplying and fixing PVC conduit ISI marked along with the accessories in concealed system etc. as required				
	PVC . Conduit 25 mm (HMS)	10	METER	64.8	648.00
18.2	18.2 Modular G.I. metal box (concealed) Supplying and fixing of approved make modular type G.I. metal box 1.2mm minimum thick and depth 50mm for single row boxes and 60mm depth for two/three row boxes earth terminal stud with nut and washer with modular base and cover plate including fixing in concealed etc. as required for:-				0.00
18.2.1	18.2.1 G.I box 1 Or 2 module 1Or 2 Module metal box	5	Each	92.00	460.00
18.2.2	18.2.2 G.I box 3 module 3 Module metal box	5	Each	115.00	575.00
18.2.3	18.2.3 G.I box 4 module 4 Module metal box	8	Each	132.00	1056.00

	18.2.4 G.I box 6 module 6 Module metal box	12	Each	138.00	1656.00
2.5	18.2.5 G.I box 8/9 module 8/9 Module metal box	12	Each	183.00	2196.00
8.2.6	18.2.6 G.I box 12 module 12 Module metal box	11	Each	223.00	2453.00
18.2.8	18.2.8 G.I box 18 module 18 Module metal box	8	Each	316	2528.00
19.1	19.1 Single core PVC insulated FRLS cable Supplying and drawing single core PVC insulated cable FRLS with copper multi strand conductor ISI marked in existing rigid PVC casing and capping/conduit in surface or concealed as per specification.				0.00
19.1.1	19.1.1 1.5 sq. mm. 1.5 sq. mm. wire	50	Meter	12	600.00
19.1.2.	1 X 2.5 sq mm			0	0.00
19.1.2.1	19.1.2.1 1 wire 1 X 2.5 sq. mm.	98	Meter	18	1764.00
19.1.2.2	19.1.2.2 2 wire 2 X 2.5 sq. mm	45	Meter	36	1620.00
19.1.2.3	19.1.2.3 3 wire 3 X 2.5 sq. mm.	45	Meter	54	2430.00
19.1.2.4	19.1.2.4 4 wire 4 X 2.5 sq. mm.	25	Meter	73	1825.00
19.1.3	19.1.3 4.00 sq. mm. 4.00 sq. mm. wire			0	0.00
19.1.3.1	19.1.3.1 1 wire 1 X 4.00 sq. mm.	20	Meter	27	540.00
					0.00
27.8	27.8 MCB 'C' Series, 240/415V, 50 Cycle, 10kA/15kA Supply of ISI marked and accepted standard of miniature circuit breaker (MCB) of 'C' series with short circuit indication, suitable for 240/415 Volts, 50 Cycle, 10 kA/15 kA Value AC supply conforming to IS : 8828 : 1996, IEC : 60898 :				0.00
27.8.1	27.8.1 Single pole Single pole				0.00
27.8.1.2	27.8.1.2 MCB SP 6A to 32A, 10kA MCB SP 6Amp to 32Amp 10kA rating	35	EACH	136	4760.00
27.8.2	27.8.2 Double Pole			0	0.00
27.8.2.2	27.8.2.2 MCB DP 6A to 32A, 10kA MCB DP 6Amp to 32Amp 10kA rating	2	EACH	425	850.00
27.8.3	FOR TRIPLE POLE (TP)			0	0.00
27.8.3.4	27.8.3.4 MCB TP 50A to 63A, 10kA MCB TP 50Amp to 63Amp 10kA rating	3	EACH	1018	3054.00
27.1	27.1 MCCB 3Ph, 3 Pole, 50Hz, 415V Supply of ISI marked and approved make of moulded case circuit breaker (MCCB) suitable for 3 phase, 3 pole, 50 Hz, 415 Volts, AC supply with respective interrupting capacity (KA) at 415 Volts cited against their range standard conforming to IS - 8828				

	27.1.2 MCCB 80 to 100A, 10kA, 3P MCCB current rating -80 to 100Amp, 10kA, 3P 415V AC	2	EACH	996	1992.00
B	27.1.3 MCCB 25 to 100A, 25kA, 3P MCCB 25kA current rating, 3P -25 to 100Amp & 80% -100% adjustable Each 2496.00	2	EACH	2496	4992.00
27.2.4	MCCB 3Ph. 3 Pole. 50Hz. 415V (with Thermal - Magnetic Release) Supplying of ISI marked and approved make of moulded case circuit breaker (MCCB) suitable for 3 phase, 3 pole, 50 Hz, 415 Volts. (Ics=100%Icu) AC supply with thermal - magnetic release having respective breaking capacity (KA) at 415 Volts cited against their range standard conforming to IS/IEC 60947-2 27.2.4 MCCB 200A, 25kA, 3P MCCB 25kA current rating - 200Amp & adjustable overload setting 80% -100% of In, adjustable short circuit setting 6-10 In 3 Pole Each 8799.	1	EACH	8799	8799.00
27.2.2	27.2.2 MCCB 125A, 25kA, 3P MCCB 25kA current rating - 125Amp & adjustable overload setting 80% -100% of In, adjustable short circuit setting 6-10 In 3 Pole Each 4861.00	1	EACH	4861	4861.00
27.21	27.21 RCBOs Supplying and installing of RCBOs (Residual current circuit breaker with overload and short circuit protection) ISI marked complete as per I.S. standard conforming to IEC:61009-1 & IS:12640-2, 240 415V 50 Hz with 10 kA short circuit withstand capacity for earth leakage, overload & short circuit protection including connection in existing enclosure in approved manner as per specification. 27.21.2 FP (8 Module) FP (8module) 27.21.2.7 4 Pole 40A. 100 300mA 4 pole 40Amp. 100 300mA sensitivity Each 3287.00	2	Each	3287	6574.00

	27.10 MCB Isolators Supplying of MCB Isolators suitable for 240/415 Volts, 50 Hz AC supply with kA value rating 10 kA of approved make conforming to IS:13947-Part III :1993 & IEC:60947- 3:2001 (without enclosures) :-				0.00
27.10.4	27.10.4 Four pole				0.00
27.10.4.2	27.10.4.2 Upto 63A Current rating upto 63Amp	8	EACH	620	4960.00
27.11	27.11 SPN MCB DB Supply of approved make powder coated sheet steel encloser SPN MCB DB inclusive of busbar, neutral bar, earth bar, connection copper wire not less than 16 sq.mm & two earth terminals etc. complete as per IS:13032(exclusive of MCB & isolator)-				0.00
27.11.6	27.11.6 12 Way double door 12 Way double door IP 43 protection	1	EACH	1262	1262.00
27.12	27.12 TPN MCB DB double door Supplying of approved make TPN MCB DB metal double door IP 43 protection with provision for FP MCB/ Isolator/ RCCB/ RCBO as incomer and SP MCBs as outgoing inclusive of busbar, neutral bar, earth bar, connection copper wire not less than 16 sq.mm & two earth terminals etc. complete as per IS:13032(exclusive of MCB & isolator):				0.00
27.12.1	27.12.1 4 Way (4+12) 4 Way (4+12)	2		1746	3492.00
27.12.3	27.12.3 6 Way (8+18)	1		2498	2498.00
27.15	27.15 Vertical TPN MCB DB, with provision for MCCB upto 250A TP/FP 50kA, double door Supply of approved make, powder coated metal double door vertical TPN MCB DB IP 43 protection with provision for MCCB upto 250A TP/FP 50kA as incomer and space for SP/TP MCBs as outgoing inclusive of busbar, neutral bar, earth bar & two earth terminals etc. complete as per IEC:61439-1 & 3(without MCCB/MCBs)				
27.15.2	27.15.2 6 Way without MCCB 6 Way without MCCB	1	Each	7888	7888.00



				0.00
41.60 Fire Survival Cable Supply of 1.60 insulated 1.5 sq. mm. Armoured 3 core fire fire alarm cable (RED) Fire Survival Cable conforming IS-7098 Part-1 1988 1000 volt grade, 2/3/4/8 10 12 core 5 twisted pair copper stranded solid conductor	15	mtr	72	1080.00
(a) INTERNAL WORK FOR BUILDING			TOTAL	443801
add 10% GST				53256
TOTAL				497057

Jeff
AF 10/10/10